

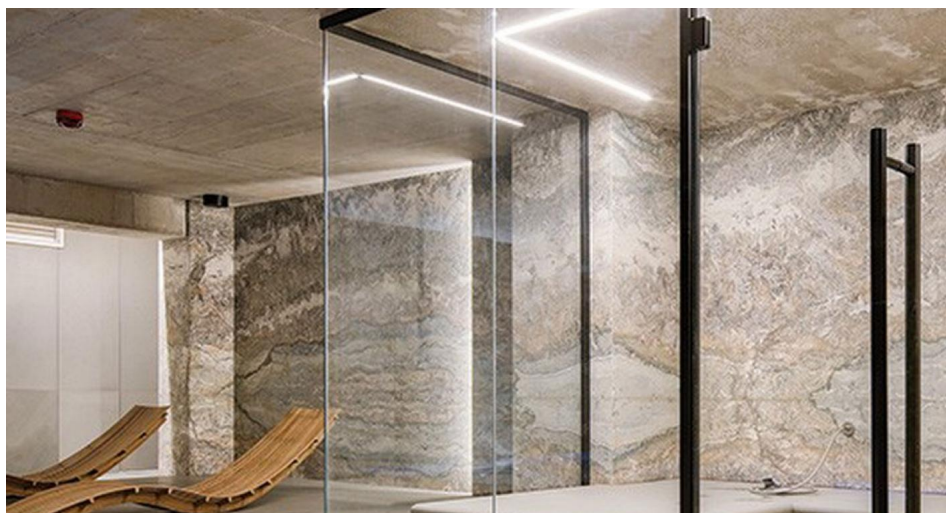
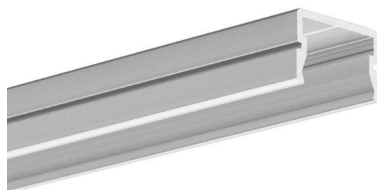
# Siler LED Tape Extrusion Profile

Siler LED Tape Extrusion Profile

Anodised Aluminium 2000mm



**MR. RESISTOR®**  
Lighting Specialist Est. 1968



## SILER ANOD 2.00M

Anodised Aluminium 2000mm

Quicklink: Q4CFD

The **Siler Extrusion Profile** is for the construction of watertight lighting fixtures, for external use, for example, to highlight elements of building facades, elements of street furniture, to illuminate garage driveways, etc.

**Please note** Diffuser is not included and needs to be purchased separately

### General

Construction Anodised Aluminium

### Dimensions

Height 12mm

Length 2m

Width 19mm

