

# FLS-2



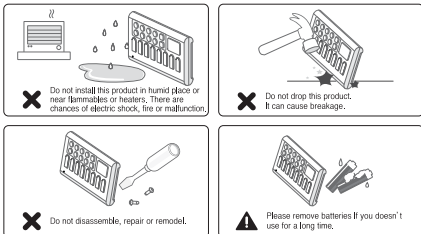
Hereby, Feelux Co.,Ltd, declares that this FLS-2 is in compliance with the essential requirements and other relevant provisions of Directive 1999/5/EC.

**WARNING INFORMATION:**  
Meaning of crossed-out wheeled dustbin : Do not dispose of electrical appliances as unsorted municipal waste, use separate collection facilities, Contact your local government for information regarding the collection systems available, If electrical appliances are disposed of in landfills or dumps, hazardous substances can leak into the groundwater and get into the foodchain, damaging your health and well-being. When replacing old appliances with new ones, the retailer is legally obligated to take back your old appliance for disposal at least free of charge.

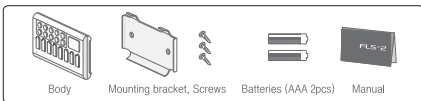
## Introduction

FLS-2 is a dimmer which controls Feelux's dimming products and other dimmable fluorescent / halogen lamps using "Zigbee" wireless communication system by receiving signals through decoders.

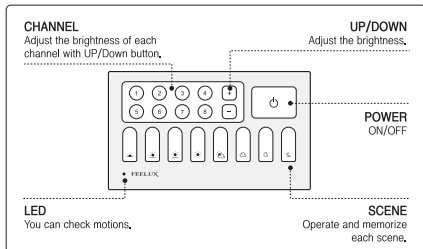
## Safety Precaution



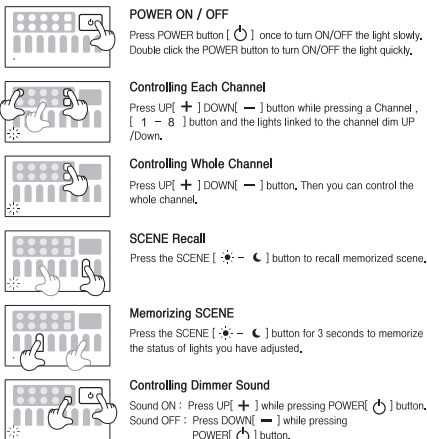
## Components



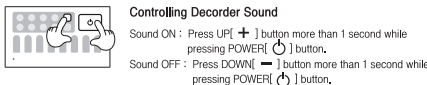
## Name And Function Of Each Part



## Basic Function



## Additional Function



### Channel Identification

Double click a CHANNEL [ 1 - 8 ] button,  
\* Then the light linked to the channel dim up for (0.5 seconds in case of PWM decoder) / 2 seconds in case of Phase decoder) and dim down for (0.5 seconds in case of PWM decoder) / 2 seconds in case of Phase decoder).

### Scene Test

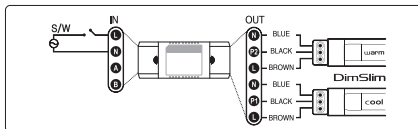
Press both UP[ + ] and DOWN[ - ] button for 3 seconds at the same time and then 8 scene swing by turns at 3 second intervals until you press other button.

### Initializing Dimmer(FLS-2)

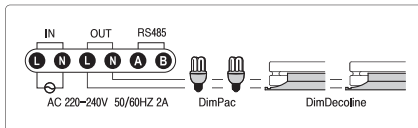
Press button [ \* ] and [ \* ] for 3 seconds at the same time and then the dimmer turns to the initial setting.

## Pairing Between Wireless Dimmer And Decoder

### DA02Z Pairing With FLS-2

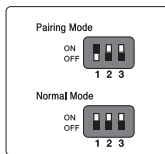


### DB02Z Pairing With FLS-2



### Pairing

1. Decoder wiring (please refer to wiring diagram).
2. Power supply.
3. Pairing mode: Move the 1st dip switch of decoder as the picture of "pairing mode".
4. LED flickers and turns to pairing mode in 10 seconds.
5. At this stage, press a channel button of FLS-2 for 3 seconds, Then LED of FLS-2 will flicker.
6. When it completes pairing process, FLS-2 sounds "beep" and Decoder sounds "beep beep".

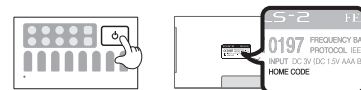


### CAUTION

1. While pairing, please keep the distance less than 5 meters between FLS-2 and decoder.
2. Pairing mode will continue for about 30 seconds, If you don't complete pairing within this 30 seconds, you have to repeat from beginning.

### Addition of FLS-2

1. If you want to control additional FLS-2 together with existing FLS-2, press power key of new FLS-2 for 3seconds.
2. Then LED will flicker, After turning off this flickering, enter the 7-digit "home code" number which is marked on the back side of existing FLS-2. When it is completed, FLS-2 sounds "beep".



## Specification

This Specifications could be revised for improvement.

Model	FLS-2	Reception	-94dBm
Frequency	2.4GHz-2.4835GHz	Transmitting Power	Max, 0dBm
Channel	8 Channels	Power Supply	DC 3V(AAA 1.5V 2pcs)
Protocol	IEEE 802.15.4 RF	Product Size	120X70X15mm

## Warranty

One-year warranty, with one-to-one free replacement after inspection, (excluding breakage due to transportation & mis-handling)