

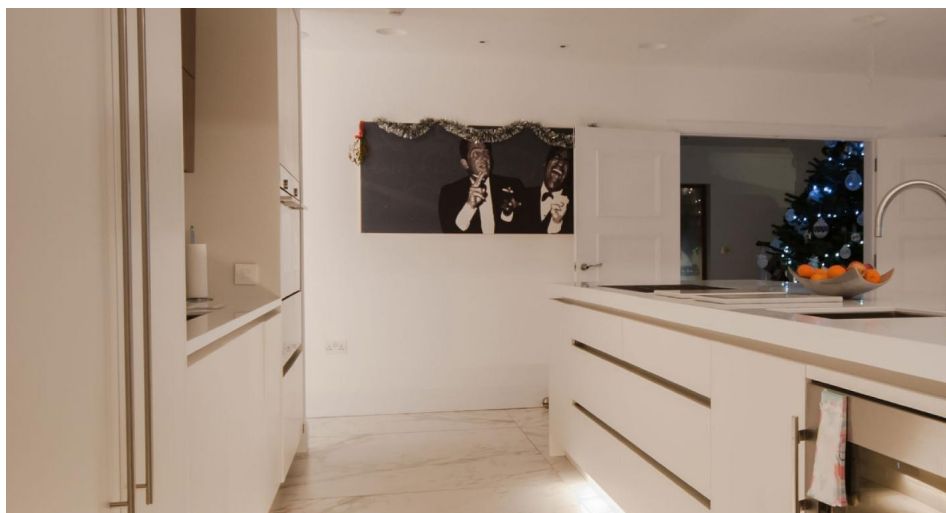
Stos LED Extrusion Profile - Cabinet and Cove

STOS Surface LED Tape Extrusion Profile

Anodised Aluminium 2070mm



MR. RESISTOR®
Lighting Specialist Est. 1968



STOS ALU 2.07M

Anodised Aluminium 2070mm

Quicklink: Q2FF9

General

Colour	Aluminium
Construction	Aluminium

Dimensions

Depth	7mm
Length	2070mm
Width	31mm

The **STOS Surface Extrusion Profile** comes in 1m or 2m lengths and is used to house LED tape, which keeps the tape light safe and out of the way.

For Interior Use - Extrusion is dedicated to being mounted to surfaces such as shelving, ceilings, cabinets etc.

Parts Required

Extrusions

As many lengths of extrusion can be used as is desired. Any 1m or 2m piece can be positioned end to end with each other to make an unlimited distance.

Endcap

An Endcap is required for each circuit of extrusions being used. It is positioned on the end of the very last extrusion in the circuit and is used to stop dust from and moisture from interfering with the electrical components.

Powerend

An Powerend is required for each circuit of extrusions being used. It is positioned on the very first extrusion in the circuit and serves the same purpose as the Endcap. The powerend has a hole in the centre which allows a cable to be fed through to power the strips.

Diffuser

A diffuser is used to give the light a more even blend. Simply purchase the same amount of diffusers as you did with extrusions.

Will fit any tape with a maximum width of 10mm.

This extrusion has been anodized.

Stos LED Extrusion Profile - Cabinet and Cove

STOS Surface LED Tape Extrusion Profile

Anodised Aluminium 2070mm



MR. RESISTOR®
Lighting Specialist Est. 1968

