

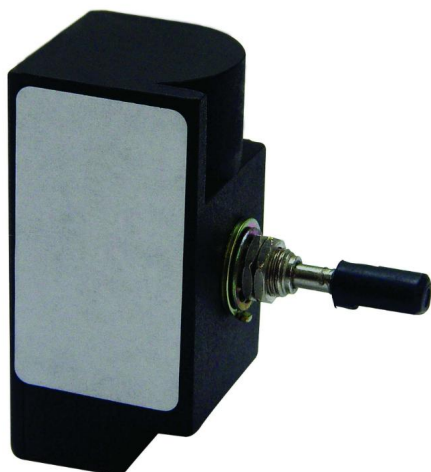
2 Way Switching Modules

Rotary Mod Intermediate

Black



MR. RESISTOR®
Lighting Specialist Est. 1968



IP INT

Black

Quicklink: Q187F

General

Colour	Black
Construction	Plastic
IP Rating	IP00

Load Type	Resistive / Inductive
-----------	-----------------------

Dimensions

Depth	24mm
Length	50mm
Width	24mm

Electrical

Voltage	240V
---------	------

The Rotary Module Intermediate Switch allows you to custom make your own switches as they easily attach to standard manufactured wall plates. They are also used to replace faulty or broken modules in existing switches. If purchased for this purpose, please ensure that you select the correct wattage and check whether it is a an inductive or resistive load. This particular module operates in a switching capacity only, therefore there is no dimming so it can take any type of load (both resistive and inductive so can therefore be used with electronic and toroidal transformers). If used for mains voltage lamps, please follow the minimum and maximum resistive loads given on this products specification.