

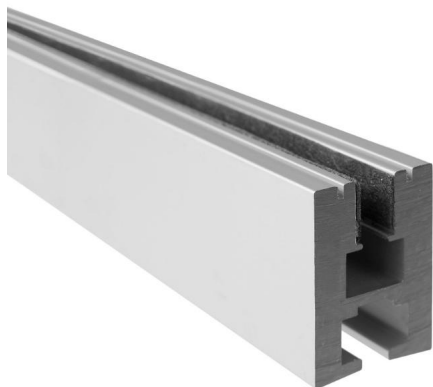
Edge LED Tape Lighting Extrusion Profile - Glass

Glass Edge Surface LED Tape Extrusion Profile

2070mm Anodised Aluminium / Glass



MR. RESISTOR®
Lighting Specialist Est. 1968



EDGE U ANOD2.07M

2070mm Anodised Aluminium / Glass

Quicklink: Q1F6B

The **Glass Edge Surface Extrusion Profile** clamps onto a 6mm thick piece of glass (not included) which then projects the LED light through the side, illuminating any frosted pattern / text which has been imprinted onto the glass surface.

This extrusion has been anodized.

The Glass Edge Surface Extrusion does not require an end cap or powerend.

General

Colour	Aluminium
Construction	Aluminium

Dimensions

Depth	34mm
Length	2070mm
Width	23mm

